

NORÐFJARÐARGÖNG GANGAGRÖFTUR OG HELSTU VANDAMÁL



Steinsteypuþagurinn
20. febrúar 2015
Birgir Jónsson HÍ / Hnit

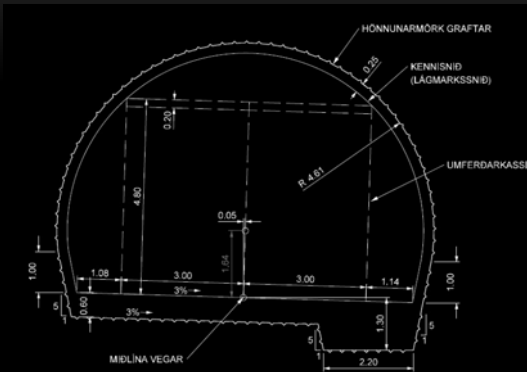
NORÐFJARÐARGÖNG

- Framvinda og tölur
- Mammútar
- Helstu vandamál
 - Setlög
 - Færslur

YFIRLIT – LYKILTÖLUR OG -DAGSETNINGAR

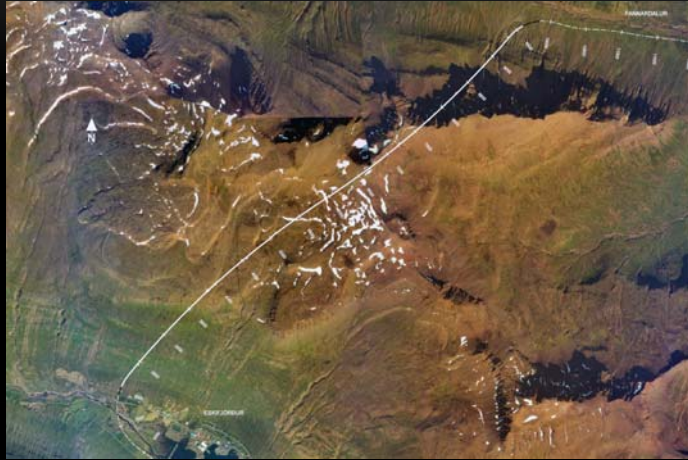
- Lengd ganga: 7566 m + 300 m vegskálar
- Gangagröftur: 435.250 m³ (ca hálf Blöndustífla)
- Bergboltar: 26.800 stk (áætlað)
- Sprautusteypa: 14.000 m³ (áætlað)
- Gangagröftur hófst: 12. nóvember 2013
- Áætlað gegnumslag: Sept 2015?
- Verklök: 1. september 2017

YFIRLIT - KENNISNIÐ



01
J202 KENNISNIÐ GANGA T8 (54,78 m²)

YFIRLIT – LEGA JARÐGANGA



YFIRLIT - ESKIFJÖRÐUR



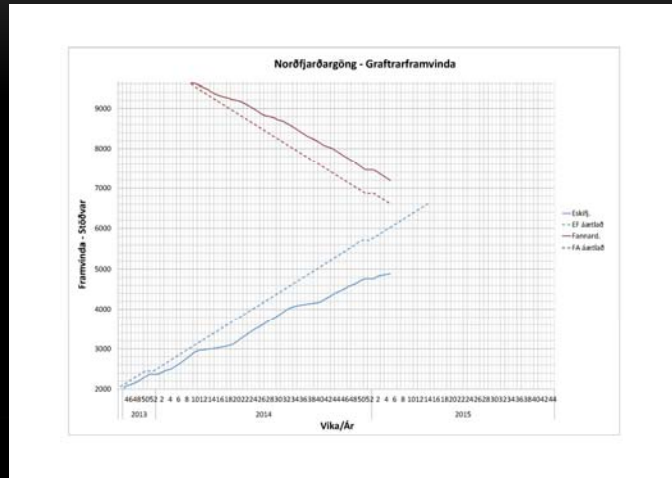
YFIRLIT - FANNARDALUR



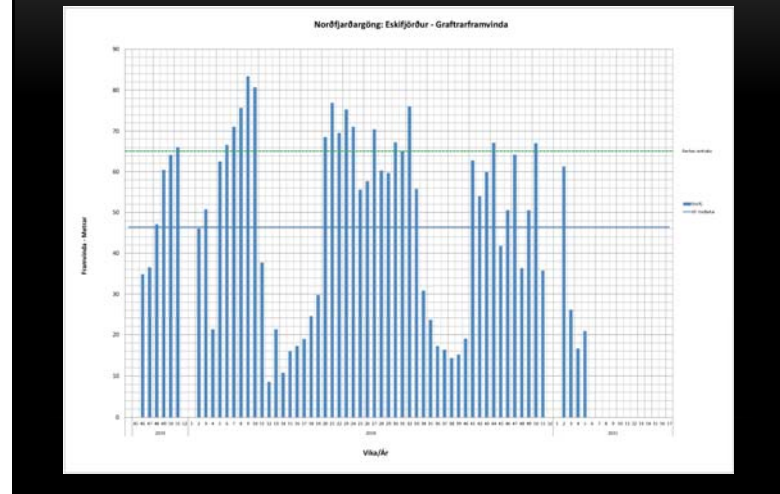
GANGAGRÖFTUR

- Útgröftur alls: 5.282 metrar (69,8%)
 - Eskifjörður: 2.846 metrar (37,6%)
 - Fannardalur: 2.436 metrar (32,2%)
- Meðalafköst: Ca. 48,0 m/viku
 - Eskifjörður: 46,4 m/viku
 - Fannardalur: 51,7 m/viku

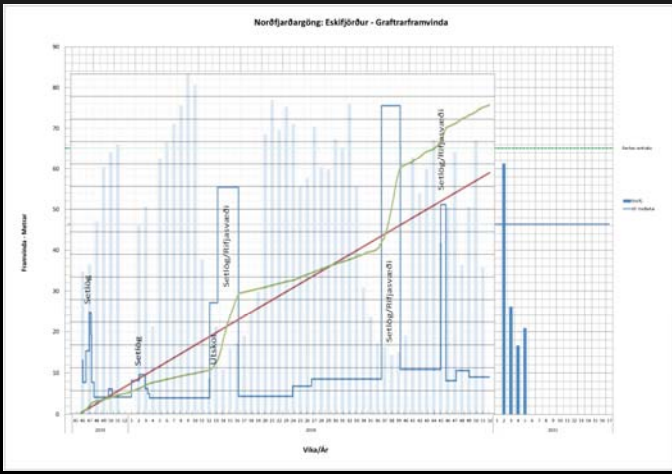
HEILDARFRAMVINDA



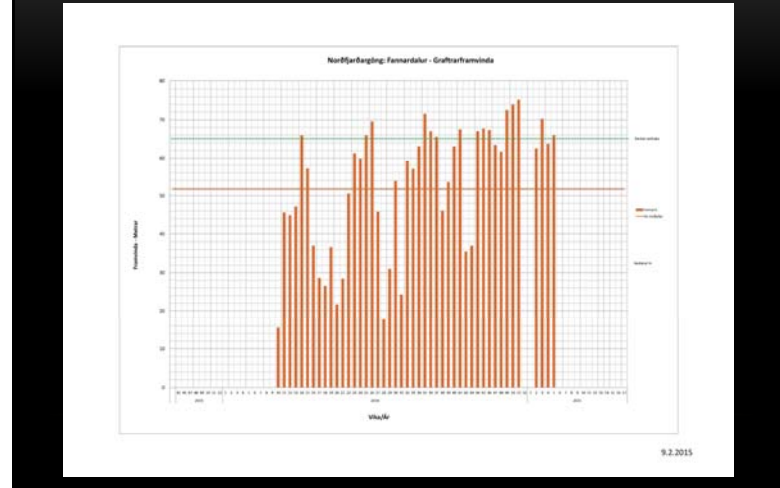
ESKIFJÖRÐUR VIKUFRAMVINDA



ESKIFJÖRÐUR VIKUFRAMVINDA



FANNARDALUR VIKUFRAMVINDA



MAMMÚTAR

ESKIFJÖRÐUR – MAMMÚTAR

- 3 vagnar samtengdir
- 128 dekk á 16 öxlum
- Ca. 220 m³ á hvorn vagn
- Ca. 400 tonn



ESKIFJÖRÐUR – MAMMÚTAR

- Mokað á bíla af rampi
- Millilagerið á nóttunni
- Amokstur nokkuð fljótlegur
- Engin umferð í göngum
 - Hægt að færa spenna
 - Hægt að sinna viðhaldi o.fl.
 - Sparar eldsneytiskostnað

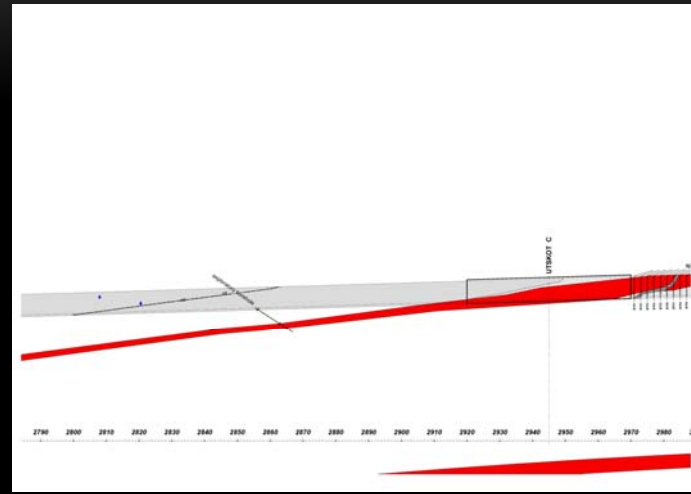


GRÖFTUR ESKIFIRÐI

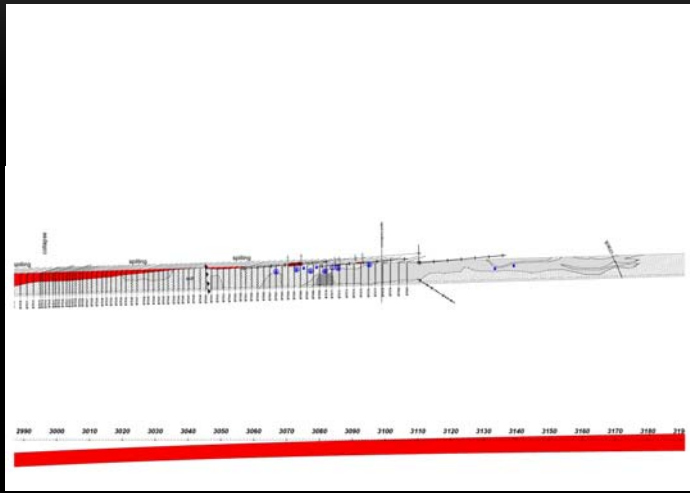
ESKIFJÖRÐUR – LANGSNIÐ



ESKIFJÖRÐUR – LANGSNIÐ



ESKIFJÖRÐUR – LANGSNIÐ



ESKIFJÖRÐUR – STÁLGRINDARBOGAR



ESKIFJÖRÐUR – STÁLGRINDARBOGAR



ESKIFJÖRÐUR – ÚTSKOT E



ESKIFJÖRÐUR – ÚTSKOT E



ESKIFJÖRÐUR – ÚTSKOT E



ESKIFJÖRÐUR – ÚTSKOT E



ESKIFJÖRÐUR – ÚTSKOT E



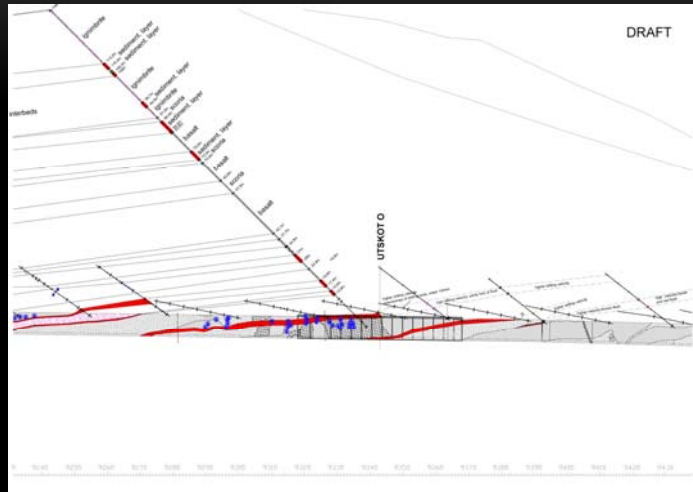
GRÖFTUR FANNARDAL



FANNARDALUR – 6. MARS



FANNARDALUR – LANGSNID



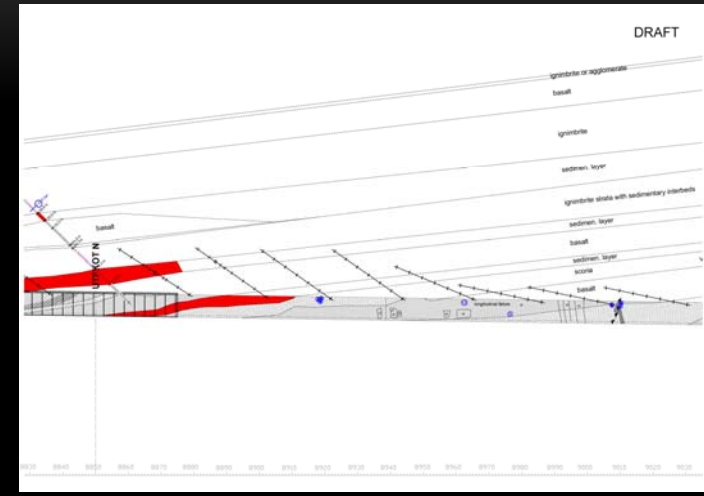
FANNARDALUR – ÚTSKOT O



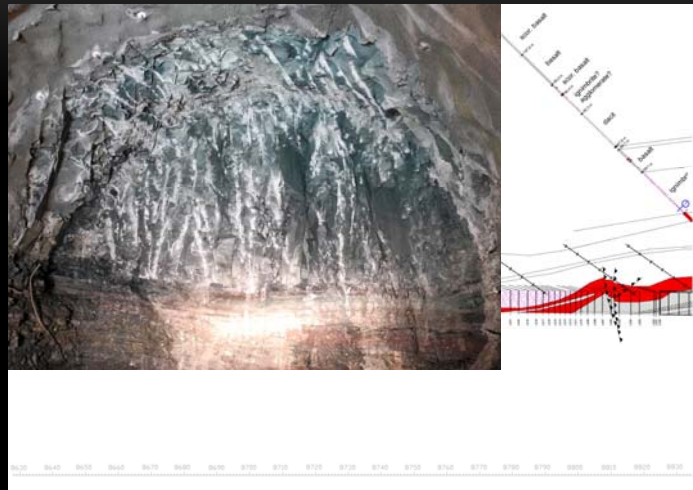
FANNARDALUR – ÚTSKOT O



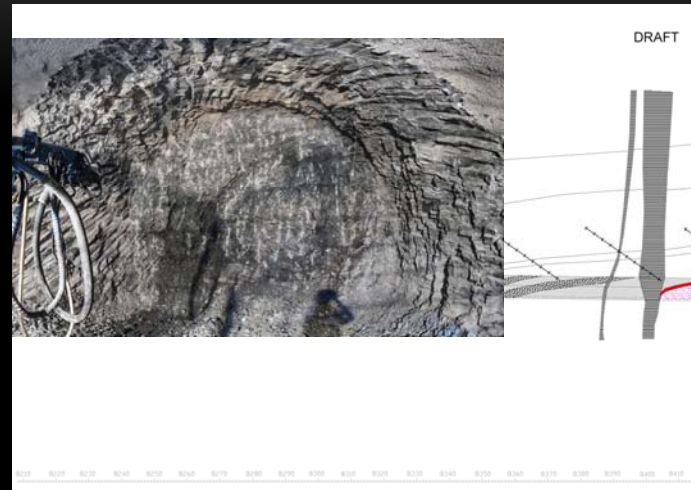
FANNARDALUR – LANGSNID



FANNARDALUR – LANGSNID



FANNARDALUR – LANGSNID - GANGUR



ENDIR