

ELLIÐAÁRVOGUR RAMMASKIPULAG

STEINSTEYPUDAGURINN 2014

Helgi B. Thóroddsen
frá Kanon arkitektum

Stefán Gunnar Thors
frá VSÓ ráðgjöf



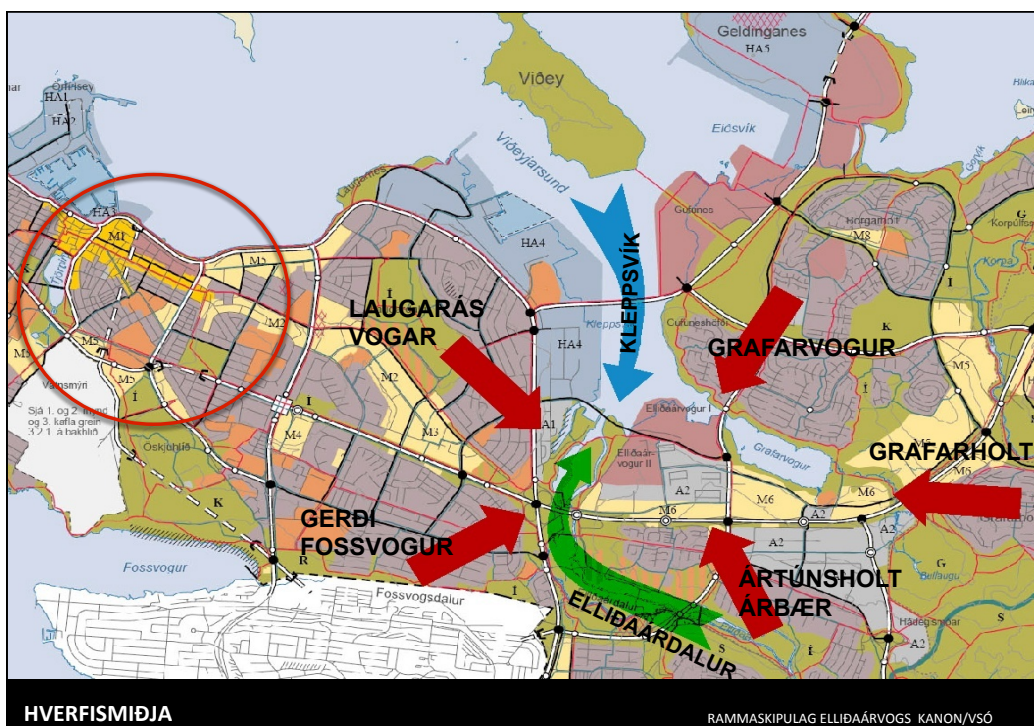
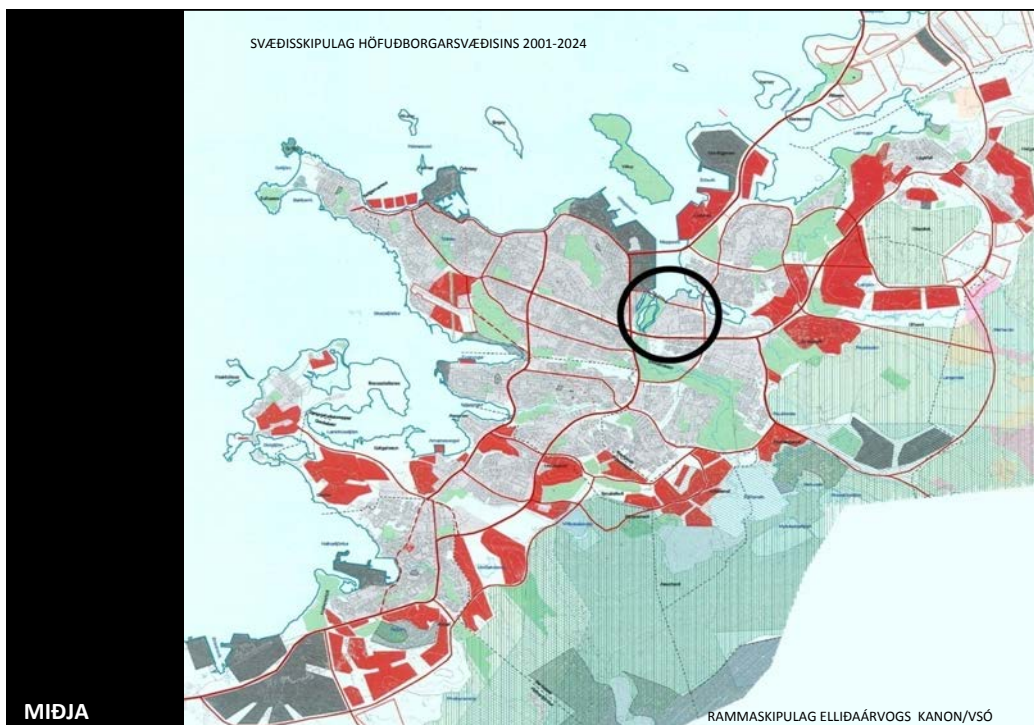
2005 - 2006 UNDIRBÚNINGSVINNA
OG LEIÐARLJÓÐ
2009 - 2010 RAMMAHLUTI AÐALSKIPULAGS
REYKJAVÍKUR 2010 - 2030

FORSENDUR SKIPULAGS :

- Þétt byggð
- Blönduð byggð
- Þjónusta í göngufæri
- Góðar vegtengingar
- Góðar almenningsamgöngur
- Fjölbreyttur ferðamáti
- Hagkvæm nýting lands
- Endurnýting lands (ekki verið að brjóta nýtt land)
- Græn svæði og verndun vistkerfis
- Einföld áfangaskipting



RAMMASKIPULAG ELLIÐAÁRVOGS KANON/VSÓ







ELLIÐAÁR

RAMMASKIPULAG ELLIÐAÁRVOGS KANON/VSÓ



IÐNAÐARMANNVIRKI

RAMMASKIPULAG ELLIÐAÁRVOGS KANON/VSÓ



SMÍÐSHÖFÐI

FRÁ BREIÐHÖFÐA



SÚÐARVOGUR

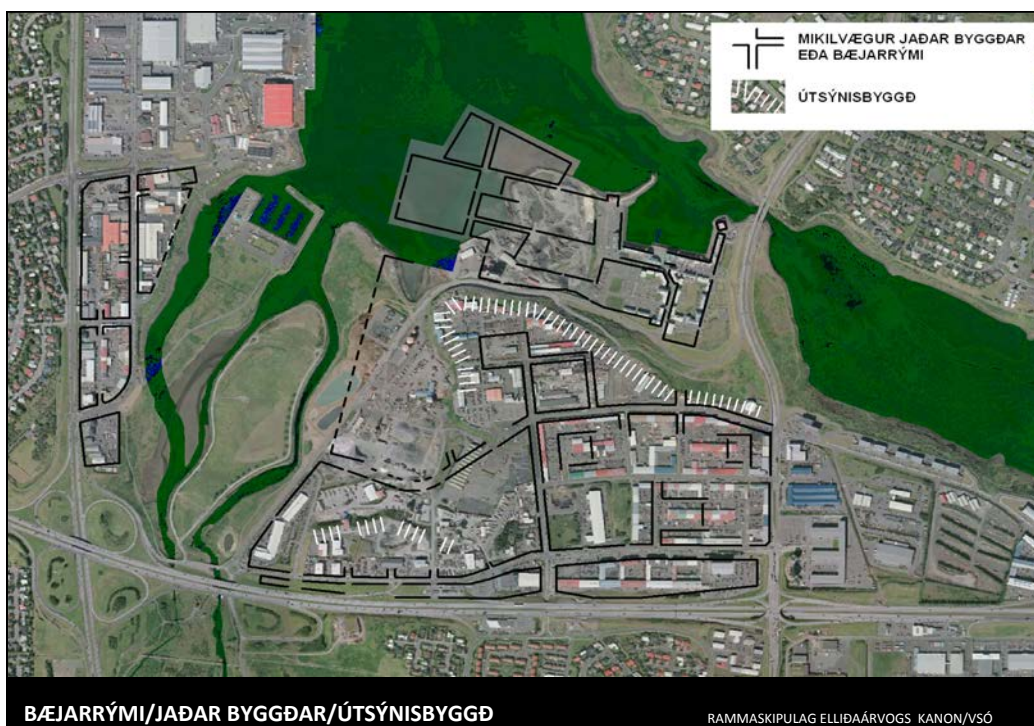
RAMMASKIPULAG ELLIDÁRVOGS KANON/VSÓ

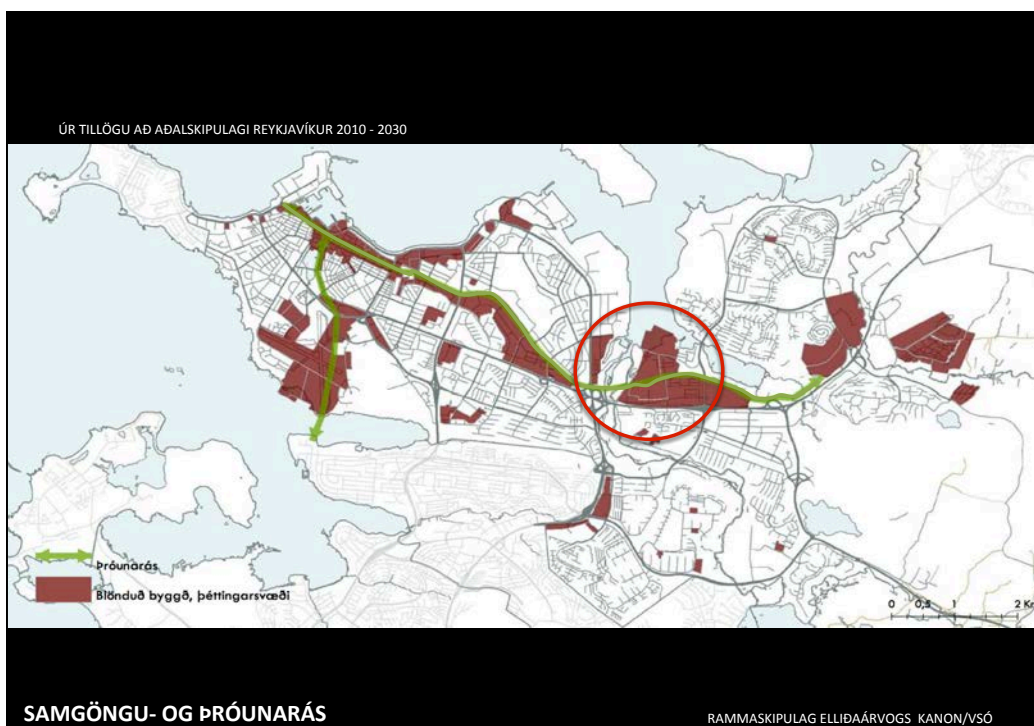


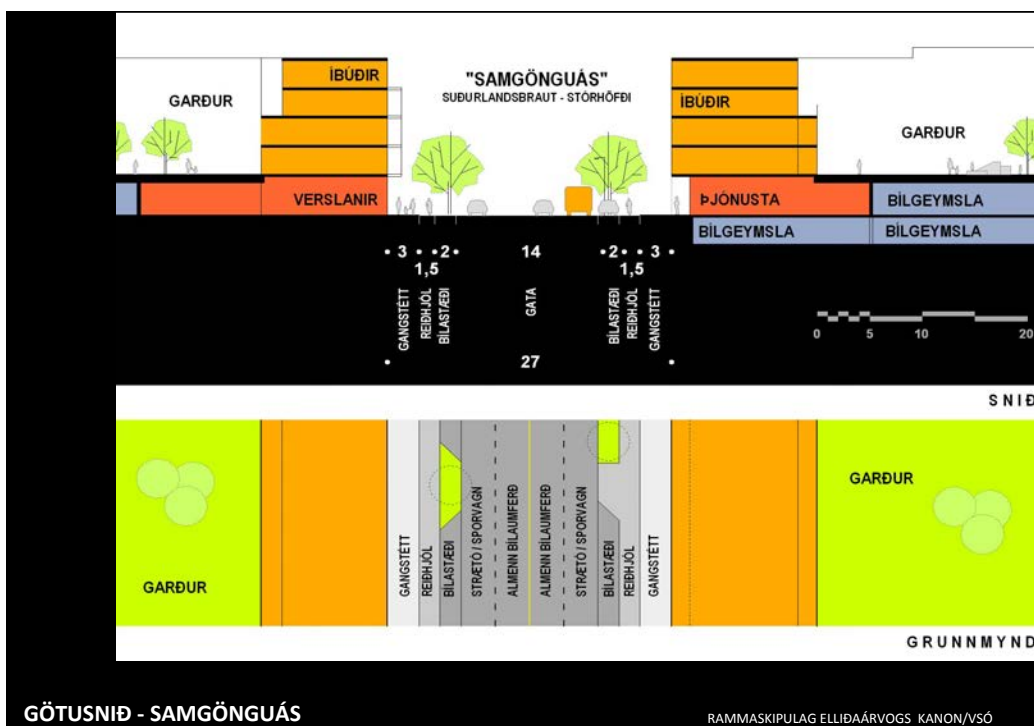
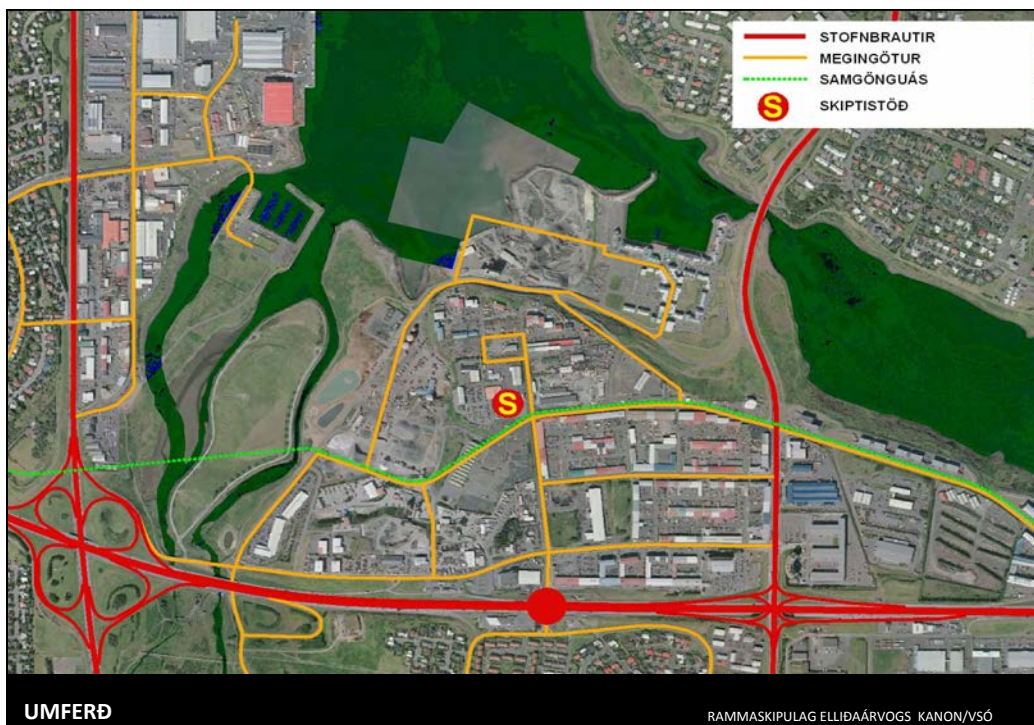
SAGA

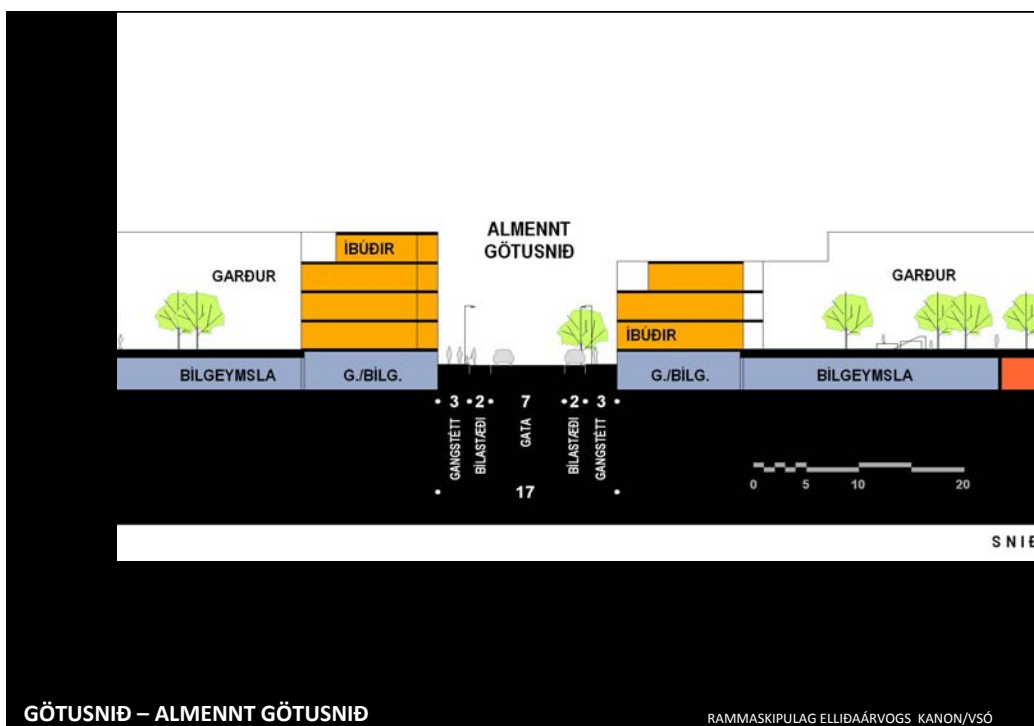
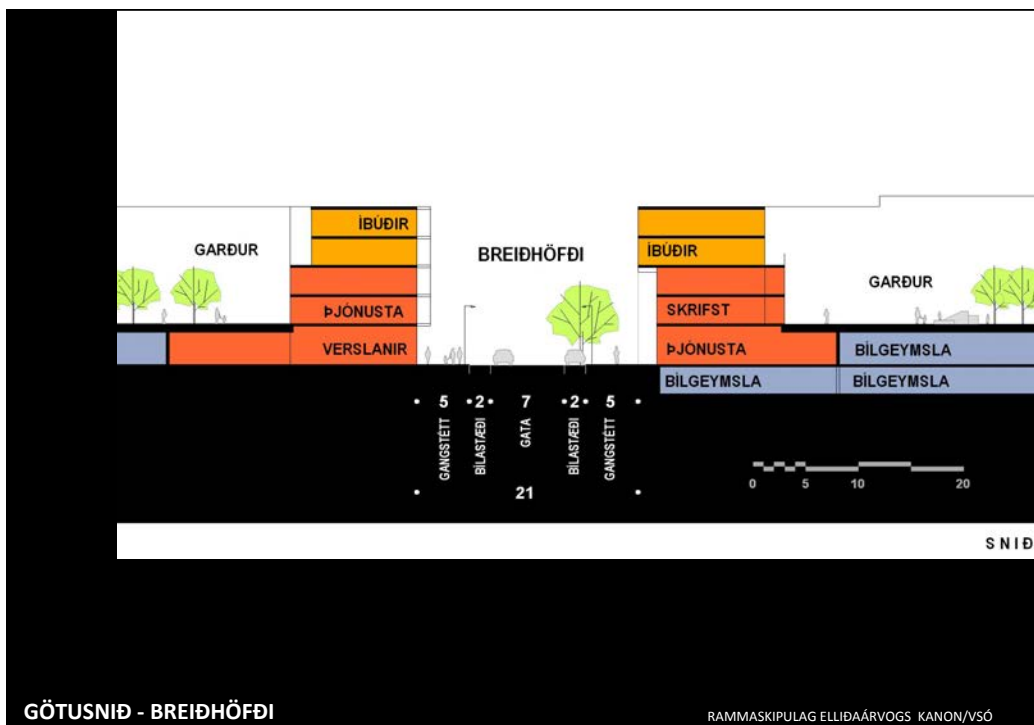
RAMMASKIPULAG ELLIDÁRVOGS KANON/VSÓ

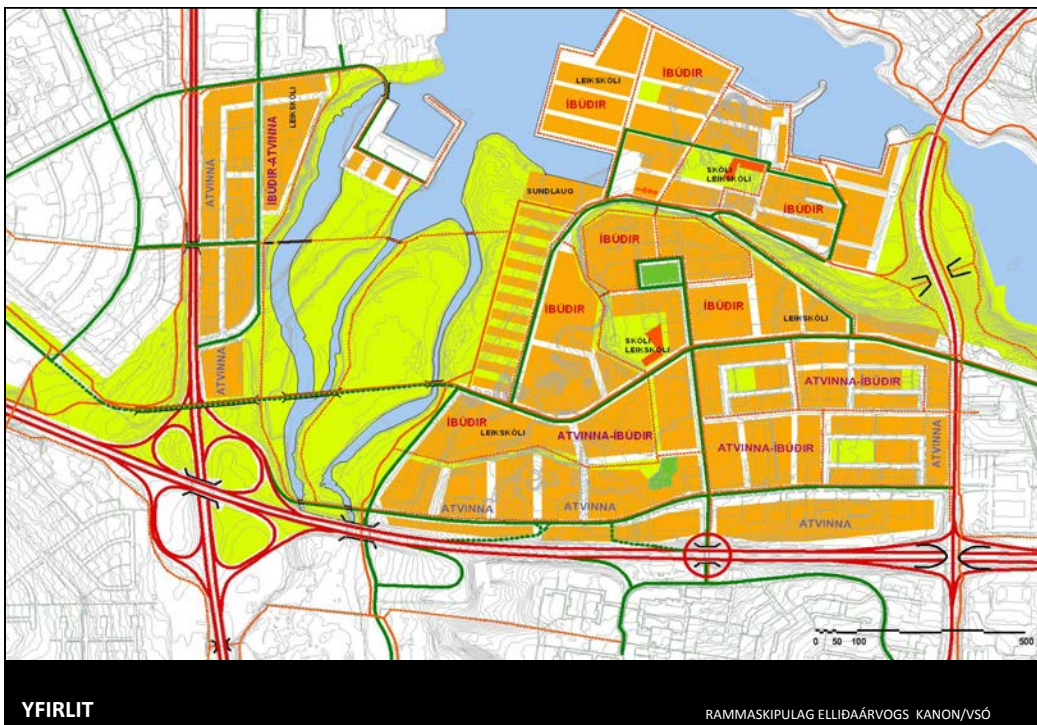




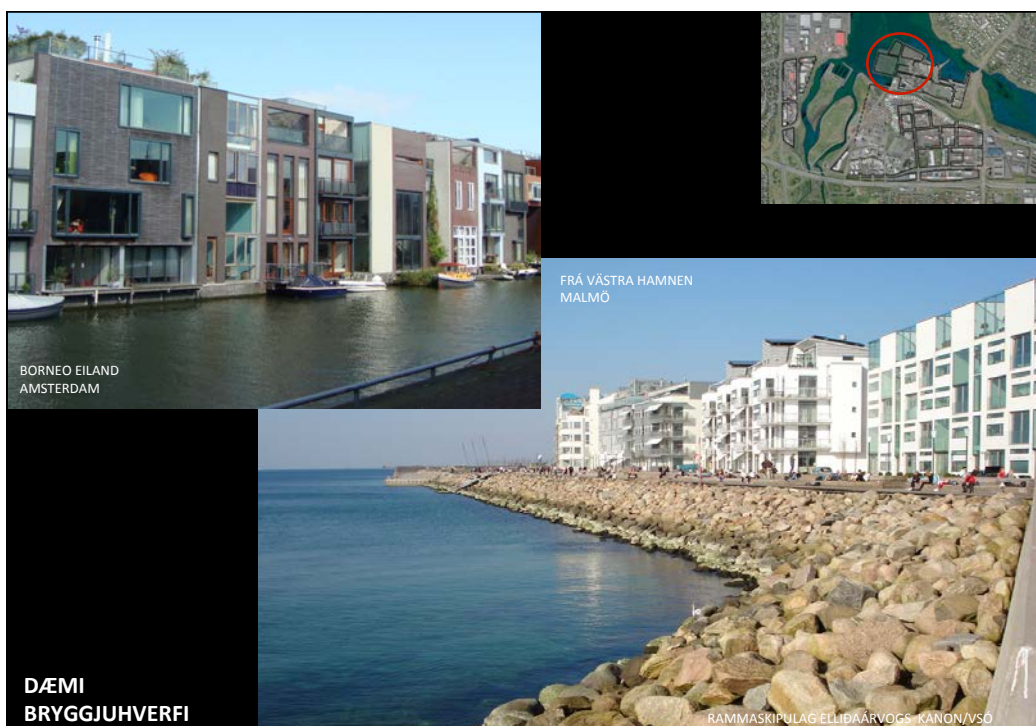
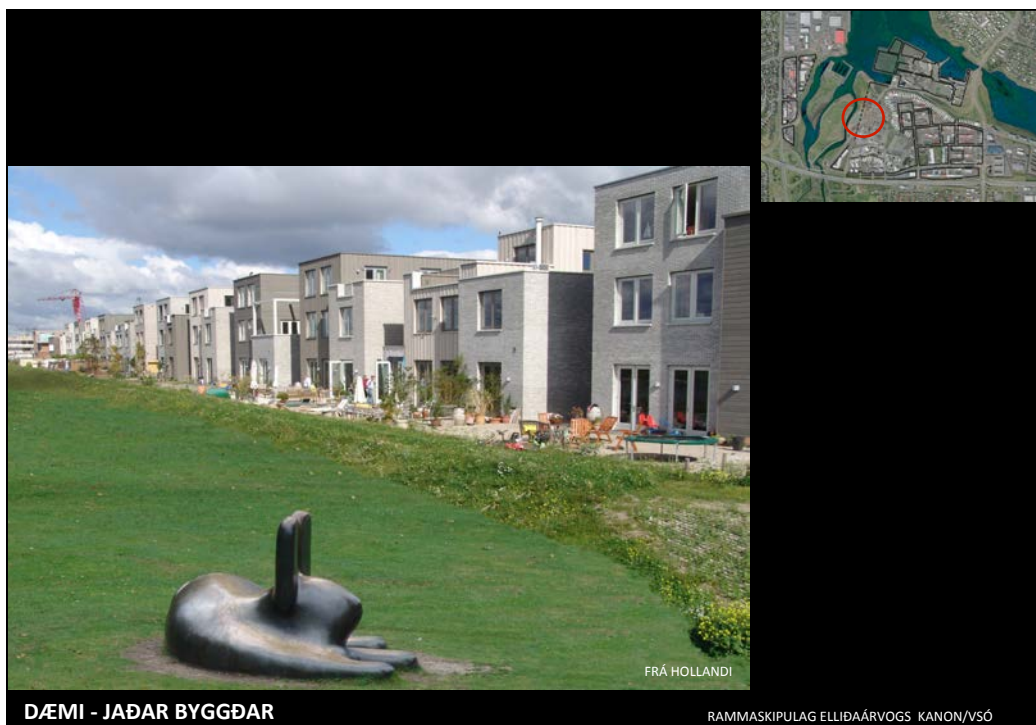






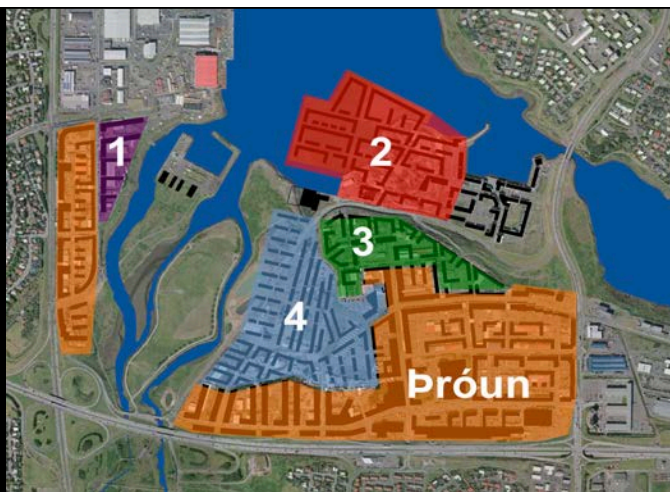








ELLIÐAÁRVOGUR



ÁFANGASKIPTING:

- Þróun byggðar sem fyrsta skref
- Nýir uppbyggingaráfangar 1 - 4
- Reitir 2 og 4 háðir flutningi fyrirtækja

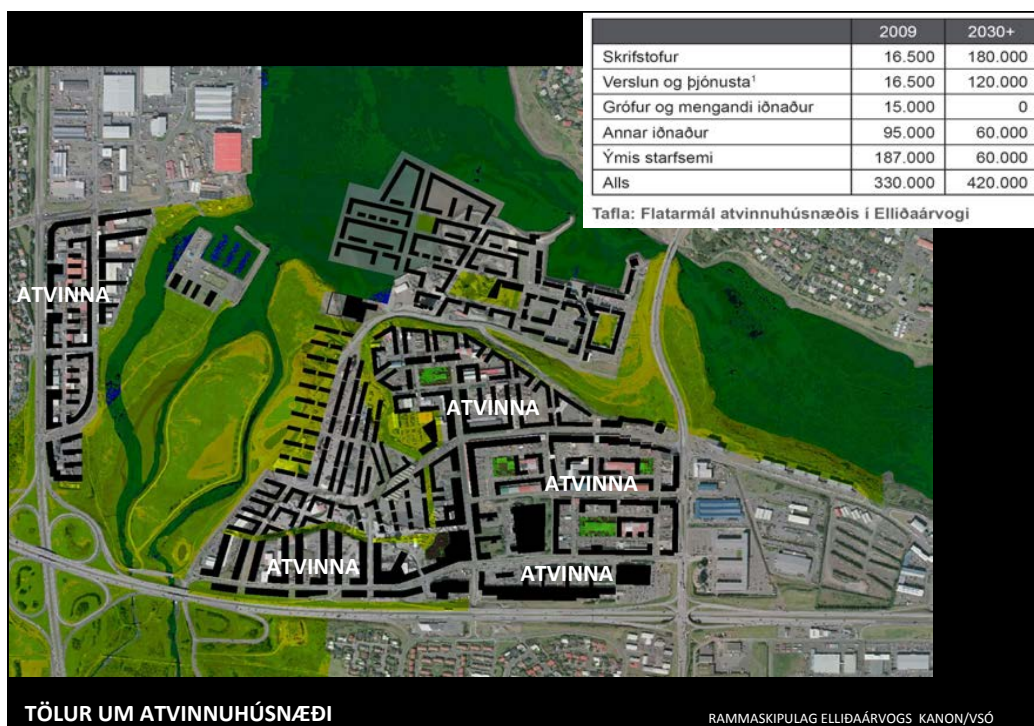
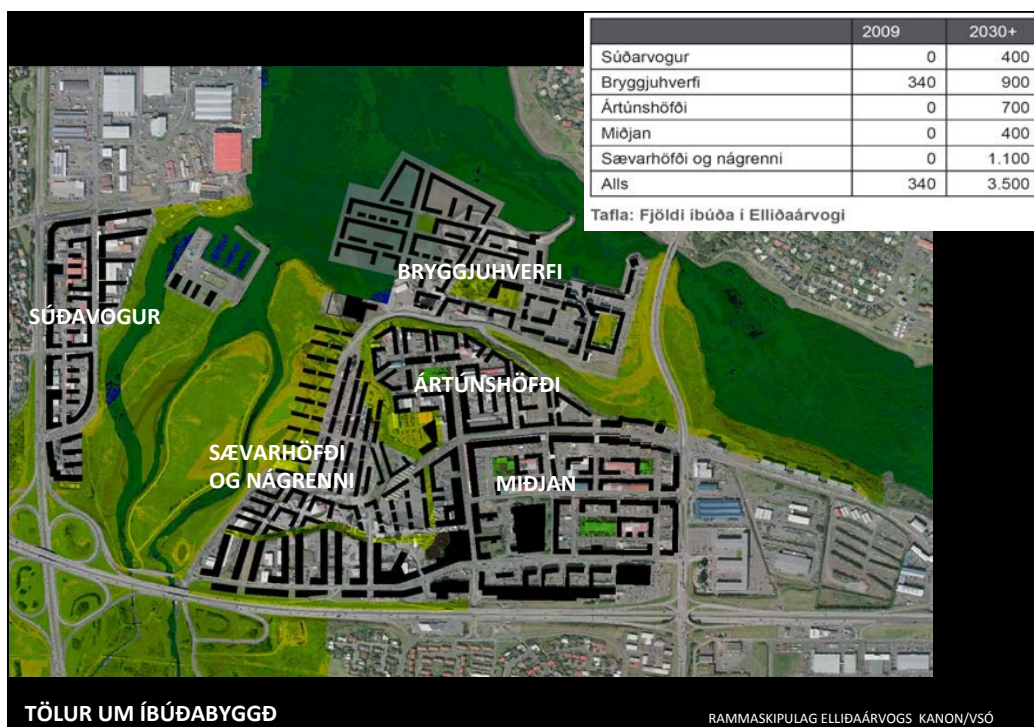
Gætt verði að hverfisgæðum á meðan þróun og uppbyggingu stendur.

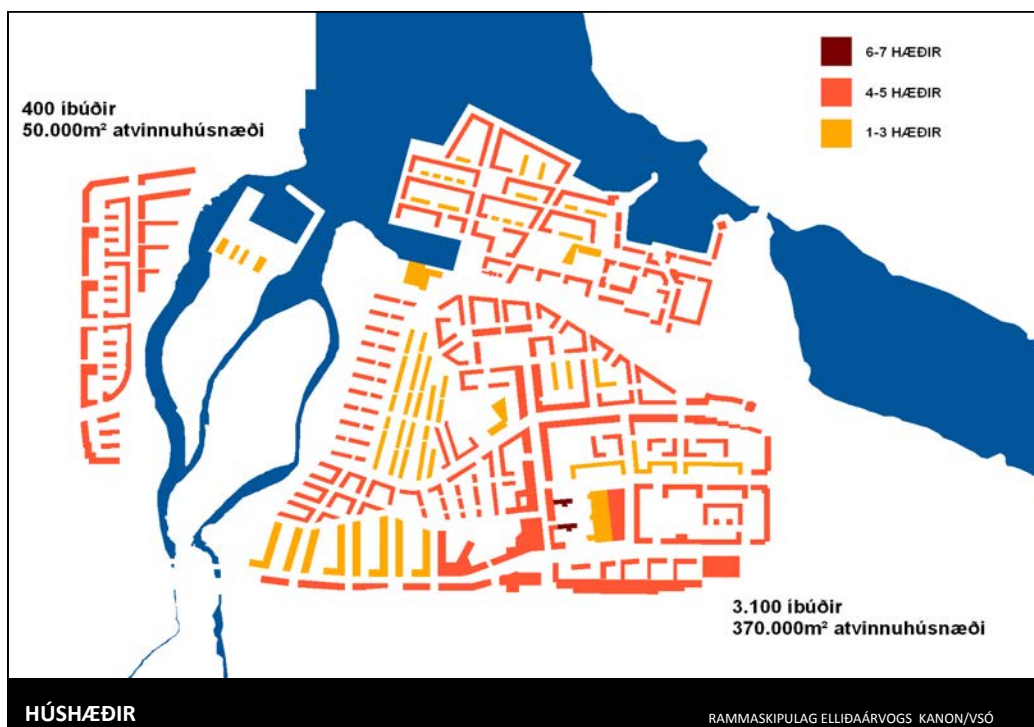
RAMMASKIPULAG ELLIÐAÁRVOGS KANON/VSÓ



STÆRÐIR

RAMMASKIPULAG ELLIÐAÁRVOGS KANON/VSÓ





ELLIDAÁRVOGUR MEÐ SJÁLFBÆRNI AÐ LEIÐARLJÓSI

ÞRÓUNARÁÆTLUN:

- Móta tillögu um útfærslu þróunaráætlunar
- Virkja fyrirtæki, stofnanir og einstaklinga
- Skilgreina markmið, ábyrgð og völd

Nota fyrirbyggjandi stefnu og leiðarljós
rammaskipulags við stefnumótun þróunaráætlunar.

